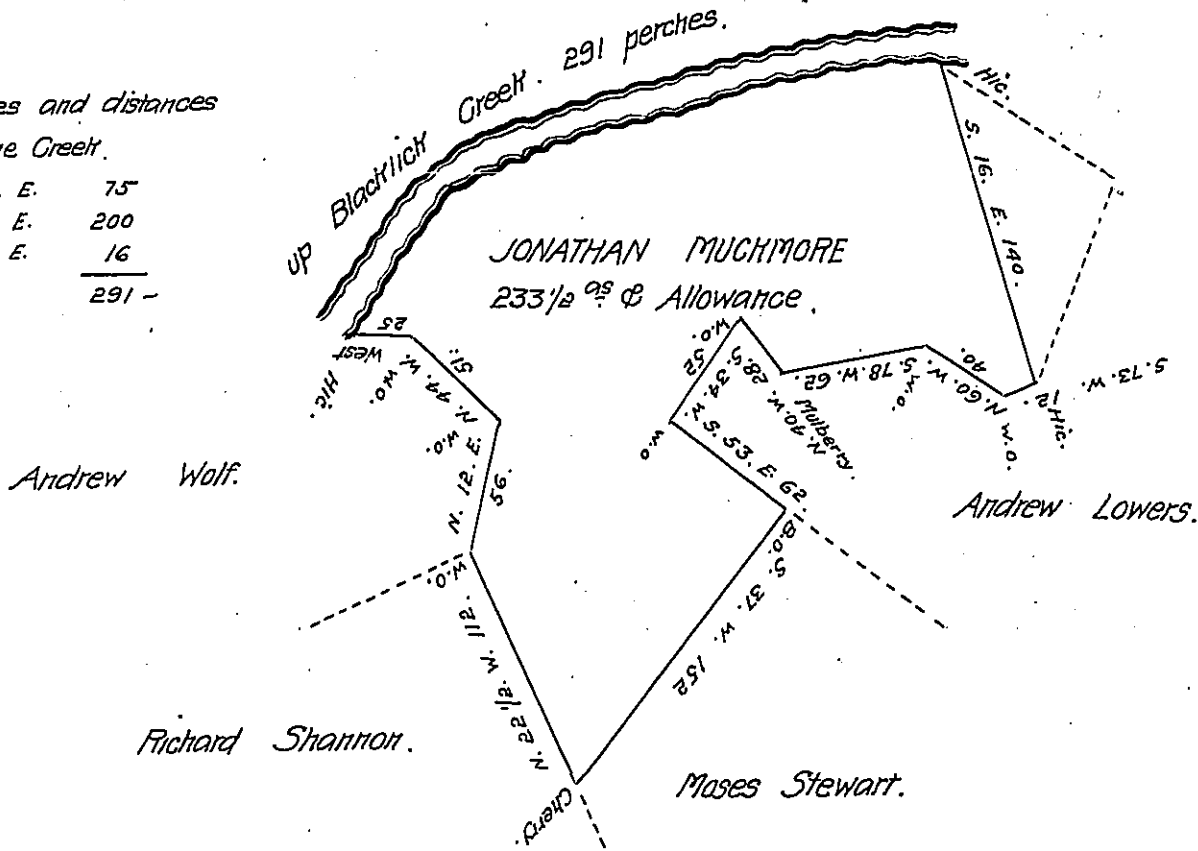


Courses and distances  
up the Creek.

N. 33. E.	75
N. 74. E.	200
S. 86. E.	16
<hr/>	
	291 -



In pursuance of the authority of the board of Property & of the Several acts of Assembly directing the recovery of the principal and interest due to the Commonwealth from persons holding lands by virtue of Location and other Office titles issued from or under the proprietary Government.

I have this 19<sup>th</sup> of December 1827 Surveyed the above ~~described~~ tract of Two hundred and thirty three acres and a half and Allowance of Six per Cent adjoining lands warranted in the name of

Andrew Lowers Moses Stewart Richard Shannon and Andrew Wolf. Situate in Blacklick Township

in the County of Indiana on the South Side of Blacklick Creek about one half mile below where

old path from Logansport to the Pittanning Crossed the said Creek Situate in Blacklick Township

Indiana County By virtue of a Location granted Jonathan Muchmore the 3<sup>d</sup> April 1769. N<sup>o</sup> 2220.

To Gabriel Heister Esquire  
Surveyor General.

John Taylor D.S.

N.B. I am informed that the above land was Surveyed and returned upon a Location granted to N<sup>o</sup> 1377.

William Brown the 3<sup>d</sup> of April 1769 and patented the date of the Survey I have not got

N<sup>o</sup> 1377. Pat<sup>d</sup>

IN TESTIMONY that the above is a copy of the original remaining on file in the Department of Internal Affairs of Pennsylvania, made conformably to an Act of Assembly approved the 16th day of February, 1833, I have hereunto set my Hand and caused the Seal of said Department to be affixed at Harrisburg, this twenty sixth day of August 190

*Henry Houder*  
Secretary of Internal Affairs.